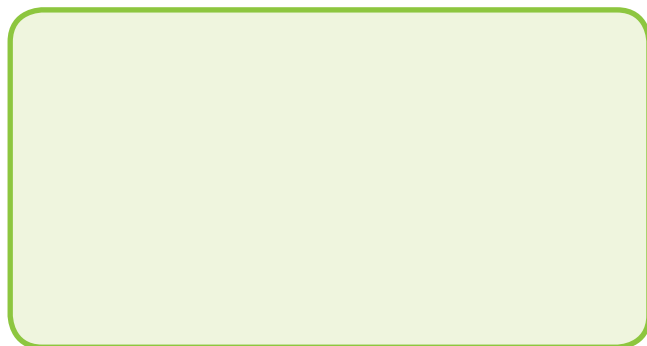




Your Authorised Garden Leisure Spa Dealer



www.gardenleisurespas.com



The manufacturer reserves the right to change product selections and/or make product modifications.

Your Garden Leisure Dealer/Contractor is an independent business person and not an agent or employee of SCP Pool Corporation or any of its subsidiaries. Neither SCP Pool Corporation nor its subsidiaries accept any responsibility for any representations, statements or contracts made by any Spa Dealer/Contractor.

Note: Colour samples shown are representations of actual colour, but are for identification only. Because the colour may vary, SCP PoolCorp does not guarantee that this colour will be an exact match to the image shown.



Garden Leisure Spas proudly uses recycled materials where possible. We practice "Green Manufacturing" procedures, while ensuring an unrivaled standard of quality.

Garden Leisure Cares!



Your Journey to Tranquility Begins Here!

Step outside your fast-paced life and into the soothing, effervescent waters of your new Garden Leisure Spa. Now offering eight models, Garden Leisure Spas has the perfect fit for every spa enthusiast.

Built to last and designed for comfort, Garden Leisure Spas offer everything discerning spa owners crave. Ample room and first-class amenities make for a winning combination while high performance pumps and a wide range of jets ensure a professional quality hydrotherapy massage.

The Garden Leisure Range will bring a sense of beauty and entertainment to your garden and a sense of serenity to your life. Generations of relaxation and fun in a Garden Leisure Spa.



Value Added Features That Set Garden Leisure Spas Apart From Others

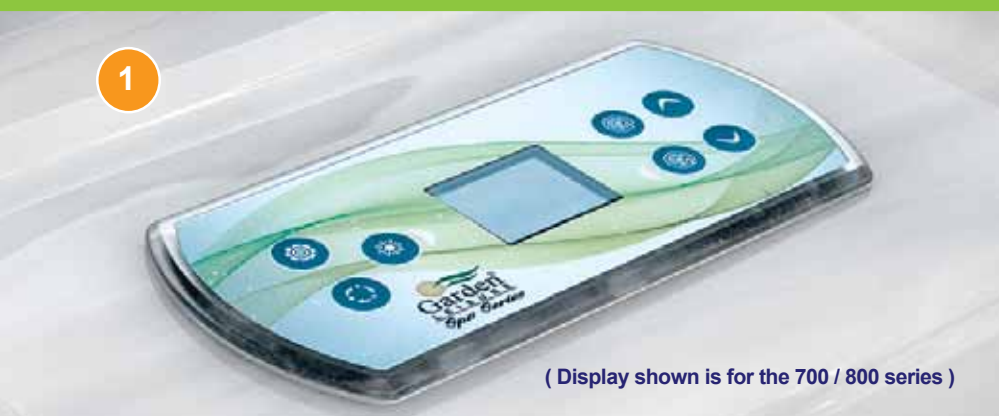
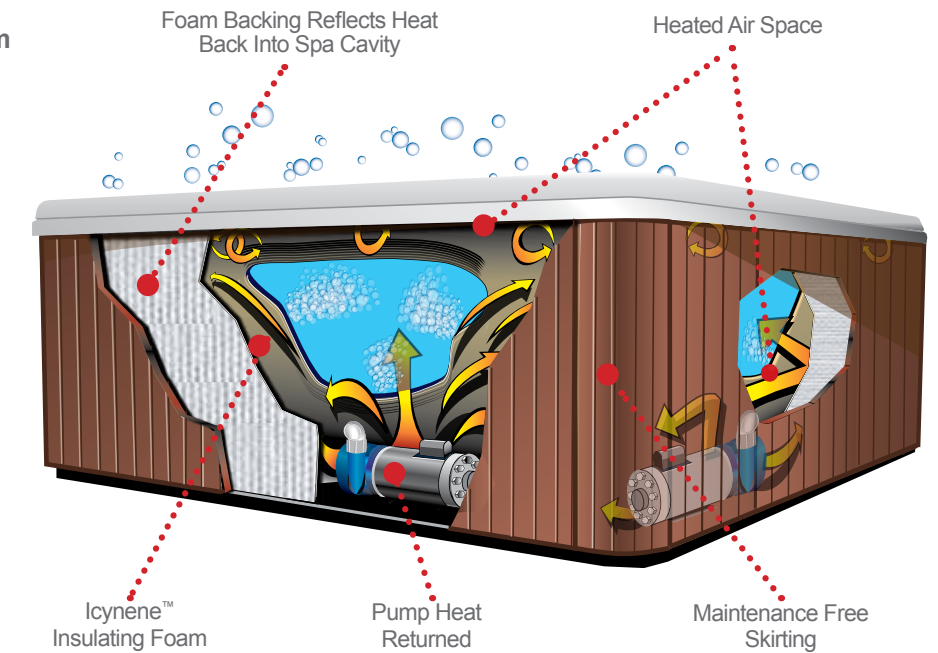
- 1 **Digital Controls On Demand Hydrotherapy**
- 2 **Air & Water Diverters**
User friendly design allows user to adjust the amount of air and water pressure
- 3 **Efficient Filtration Systems**
(Styles may vary - open filter on GL635, GL625 & GL525. Enclosed filter on 7' & 8' models)
- 4 **Fountain Jets & Waterfalls**
(GL625L equipped with waterfall)
- 5 **UV Treated, Padded & Deluxe Headrests**
- 6 **Extra Large Footwell**
(Calf and ankle jets included on select models)
- 7 **Adjustable Stainless Steel Jets**
(Jet styles vary by model)

At Garden Leisure Spas we develop a unique product. We invest time into constructing well-built spas, use the highest quality materials and develop a state-of-the-art therapeutic and entertainment user experience. An infinite amount of research stands behind the jet placement in every Garden Leisure Spa. These spas are built for style, stress reduction, and therapeutic benefits. From comfort seating with UV resistant padded headrests to powerful pumps, Garden Leisure rejuvenates both body and mind.

Engineering Features

The Hydro-Heat Five Point Insulation System

- Icynene™ Foam
- Foam Backing
- Maintenance Free Cabinet
- Heated Air Space
- Pump Heat Returned



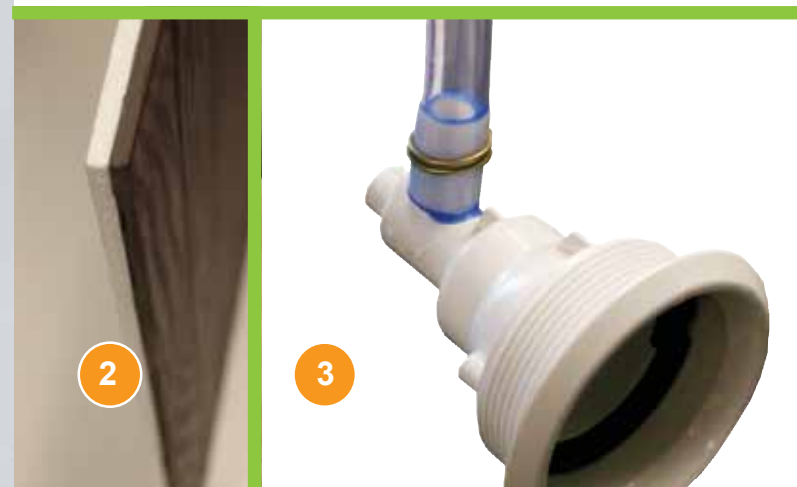
(Display shown is for the 700 / 800 series)



- 1 **Optional 24hr Circulation Pump**
(available on GL635 and above only)
- 2 **Foam Backed Cabinet Panels**
Provides added insulation benefits
- 3 **Superior Bond - Double Protection**
Glued and Clamped fittings ensure an extra secure bond between pipes and jets
- 4 **Oversized Pump System**
Energy efficient on both high and low speeds with 56 Frame design. Installed on anti-vibration and noise reducing pad



- Up To Four Times The Filtration
- Adds Life To Regular Spa Pump
- Energy Efficient - Reduces Cost
- Pump Is Whisper Quiet
- Reducing Your Electrical Bill



Maintenance Free Cabinets and Colour Combination Options

Garden Leisure Spas offers a variety of popular colour options - designed to fit any decor. With proper care, your hot tub will be as rich and lustrous years from now as it is today.

The Garden Leisure Spa polymer cabinet offers an unparalleled look, texture, and performance. Our polymer cabinets are maintenance free and feature custom rounded corners and removable panels for access to all areas inside the spa. The Garden Leisure Spas cabinetry is moisture and impact resistant, therefore it doesn't crack or fade. It is also sound proof and flame retardant.

Garden Leisure Spas cabinet provides additional insulation, which in turn means a cost savings for the customer. In fact, the Garden Leisure Spas Polymer cabinet combined with interior foam insulation, is rated with an R-27 insulation value (as a complete insulation system).

- Deep Breathtaking Colours
- Faux Stone & Wicker Options Available (*Upcharge will apply*)
- Easy to Clean
- MAINTENANCE FREE CABINETS !

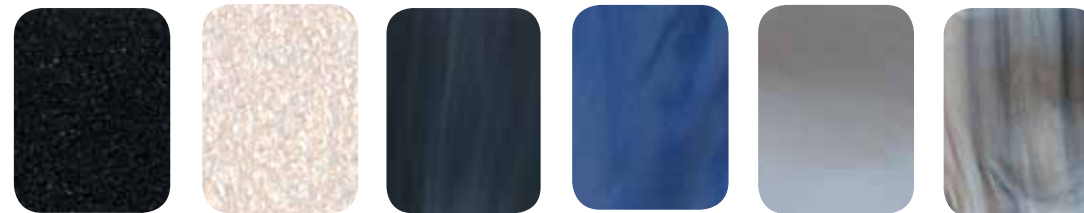
Acrylic Surface Colour Choices - Standard Colours



Sterling Silver (*Quick Ship*)

Storm Cloud
(*Quick Ship Colour only available on certain models*)

Acrylic Surface Colour Choices - Optional Colours



Satin

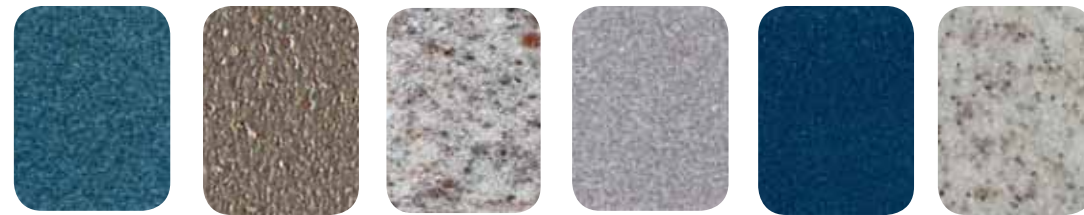
Cameo Pearl

Shadow

Majestic Sky II

Desert Horizon

Tuscan Sun



Caribbean Blue

Mocha

Moonscape Pearl

Silk

Cobalt lustre

Sierra

Cabinet Colour & Style Choices



Ash Grey

Cocoa Brown

Brown / Wicker



Canyon Grey / Stone

Sierra Brown / Stone

Lucite SPA

Lucite is a registered trademark of Lucite International, Inc.

Note: Colour samples shown are representations of actual colour, and are for identification only. Because the colour may vary, there is no guarantee that this colour will be an exact match to the image shown.
Please note: wicker and stone up-charges apply, only available on the 700 and 800 series



The Sound of Music - Integrated Bluetooth™ FM/MP3 System

Whether you are relaxing alone, sharing time with a loved one or entertaining friends—the sound of music always adds pleasure to the occasion. Garden Leisure Spas offer an optional Bluetooth™ stereo system with MP3 input which includes quality marine speakers for the ultimate sound quality that parallels the Garden Leisure models.



Optional Audio System;
Aquatic AV Bluetooth™
/ FM Audio with Docking
Station, Remote Control
and Marine Grade
Speakers

The AQ-DM-5UBT Digital Media Locker™ is a high quality, robust and durable waterproof marine grade stereo for use with Bluetooth, USB, iPhone, iPod and MP3 devices.

Fits most smartphones, including larger models such as Samsung Galaxy Note 2. Simply insert your digital media device into the locker, close the door and turn on!

Control your device via the external door controls or remotely using the fully waterproof, floating 2-way RF (radio frequency) remote control. The remote has a range of 40ft and displays songs and track information on the LCD screen.

IAP Bluetooth connectivity allows device information, such as song, playlist and album titles, to be streamed wirelessly and viewable on the remote control's LCD screen.

As with all Aquatic AV waterproof or marine stereos the AQ-DM-5UBT is designed and built to withstand the harsh conditions associated with use in marine, boat, pool & Spa applications

- Supports IAP Bluetooth, USB, iPod, iPhone & MP3 devices
- Fits most smartphones and media devices including Samsung Galaxy Note 2
- FM Radio - 2-Way Radio Frequency remote with 40ft range
- External Door Controls
- Waterproof Floating Remote
- 2 Marine Grade Speakers
- DSP EQ Presets, Bass / Treble, Balance / Fader
- Built -in 288W Amplifier and Subwoofer
- Specifically Designed For Spas



Speaker location varies by model.



The Bluetooth® word mark and logo are registered trademarks owned by Bluetooth SIG, Inc. Other trademarks and trade names are those of their respective owners. iPhone and iPod are trademarks of Apple inc, registered in the US and other countries.



Hot Water Hydrotherapy And The Benefits

Dynamic hydrotherapy is our primary goal, it is the heart of our spas. An infinite amount of research stands behind the jet placement in every Garden Leisure Spa. These spas are built for style, stress reduction, and therapeutic benefits. You won't have to play "musical chairs" to gain the utmost comfort from the generous number of therapy jets. These jets are all connected by the Garden Leisure plumbing system, which provides maximum water flow through the use of extra large hoses and tubing. Sure-grip fittings ensure a secure bond between pipes and jets. Neck Jets target neck and shoulders, massage jets soothe shoulders and lower back, Carpal Tunnel Jets ease hands and fingers while Jumbo jets, located in the footwell, provide the ultimate foot massage.

- Strategically Placed For The Utmost Benefits
- Jet Placement Targets Major Muscle Groups For Fast Pain And Stress Relief
- Adjustable, Interchangeable Jets Allow You To Customise The Action
- Diverter Controls Allow The User To Adjust The Amount Of Water Pressure To Each Seat

Garden Leisure Spas' Hydrotherapy System Relieves:



(Large) Power Massage (Multi Shower)	(Large) Power Rifle (Enhanced Steady Stream)	Large Face Poly Twin Roto (Rotating Dual Stream)	Mini Rifle (Enhanced Steady Stream)	Large Directional (Adjustable Steady Stream)	Mini Massage (Three Stream Shower)	Cluster Shower (Enhanced Multi Shower)	Cluster Directional (Adjustable Steady Stream)

LED Lighting

Spa lighting and colour can do more than further enrich your soak, they can define your spa environment. They can change the mood from a party atmosphere to a romantic setting, as well as an added safety feature after dark. The adjustable and synchronized LED lighting system glows from the footwell up to the spa lip and controls. An optional package also includes backlit jets. The visual delight of water shooting through a beautiful spectrum of colour adds unique charm to your spa atmosphere after dusk.

- 1 Exterior Cabinet Lighting
- 2 LED Interior Light
- 3 Full Colour Display
- 4 Backlit Air & Water Diverters
- 5 Backlit Speakers

- Long life with no added heat
- Changes colours with numerous light shows
- Vibrant solid colours
- Illuminated jets optional



GL863L (Lounger equipped) *Stereo Standard*



Size: 231 x 231 x 99 cm
 Jets: 63 - 4 Swirl Stainless Steel Jets
 Seats: 6 Adults
 Litres: 1703 L

Jet System

Grey / Stainless Steel	63 Total
Poly Storm Twin Spinner	9
Poly Storm Directional	18
Cluster Storm Twin Spinner	8
Cluster Storm Rifle	11
Mini Storm Directional	11
Mini Storm Massage	2
Power Storm Twin Spinner	2
Power Storm Massage	2
Ozone Purification Jet	1
Laminar Fountain Jet	2

Weight: Dry / Filled (approx.) 408 kg. / 2041 kg.

GL863B (Bench) *Stereo Standard*



Size: 231 x 231 x 99 cm
 Jets: 63 - 4 Swirl Stainless Steel Jets
 Seats: 7 Adults
 Litres: 1703 L

Jet System

Grey / Stainless Steel	63 Total
Poly Storm Twin Spinner	6
Poly Storm Directional	18
Cluster Storm Twin Spinner	6
Cluster Storm Rifle	13
Mini Storm Directional	15
Power Storm Twin Spinner	2
Power Storm Massage	3
Ozone Purification Jet	1
Laminar Fountain Jet	2

GL753L (Lounger equipped) *Stereo Option Available*



Size: 208 x 208 x 99 cm
 Jets: 53 - 4 Swirl Stainless Steel Jets
 Seats: 6 Adults
 Litres: 1230 L

Jet System

Grey / Stainless Steel	53 Total
Poly Storm Twin Spinner	10
Poly Storm Directional	14
Cluster Storm Twin Spinner	5
Cluster Storm Rifle	10
Mini Storm Directional	8
Mini Storm Massage	2
Power Storm Twin Spinner	1
Power Storm Massage	3
Ozone Purification Jet	1
Laminar Fountain Jet	2

Weight: Dry / Filled (approx.) 362 kg. / 1542 kg.

GL753B (Bench) *Stereo Option Available*



Size: 208 x 208 x 99 cm
 Jets: 53 - 4 Swirl Stainless Steel Jets
 Seats: 7 Adults
 Litres: 1230 L

Jet System

Grey / Stainless Steel	53 Total
Poly Storm Twin Spinner	10
Poly Storm Directional	12
Cluster Storm Twin Spinner	7
Cluster Storm Rifle	6
Mini Storm Directional	14
Power Storm Twin Spinner	2
Power Storm Massage	2
Ozone Purification Jet	1
Laminar Fountain Jet	2

Standard Features on the GL863L & GL863B			Optional Features
Gecko™ XE Class Pack 32 AMP Digital Topside Control Two 56 F 2.5 bhp Pumps 4 kW Heater 100 ft ² Filtration	Icynene™ Foam Insulation Maintenance Free Cabinet ABS Bottom-Wrap Plasma Ozone Water Treatment LED Lighting LED Lit Cabinet Corners	Lucite™ Acrylic Surface Material Laminar Fountain Jets Padded Headrests Diverter VGB Compliant Intake 3 Yr. Parts / Labour Warranty	(CIRC) Circulation Pump • (IT) in.Touch™ • (CL) in.Clear™ Sanitation System Additional charges apply

Standard Features on the GL753L & GL753B			Optional Features
Gecko™ XE Class Pack 32 AMP Digital Topside Control Two 56 F 2.5 bhp Pumps 4 kW Heater 100 ft ² Filtration	Icynene™ Foam Insulation Maintenance Free Cabinet ABS Bottom-Wrap Plasma Ozone Water Treatment LED Lighting LED Lit Cabinet Corners	Lucite™ Acrylic Surface Material Laminar Fountain Jets Padded Headrests Diverter VGB Compliant Intake 3 Yr. Parts / Labour Warranty	(CIRC) Circulation Pump • Stereo System <i>Waterproof Remote & Subwoofer</i> • (IT) in.Touch™ • (CL) in.Clear™ Sanitation System Additional charges apply

GL635L (Lounger equipped) *Stereo Option Available*



Size: 198 x 211 x 91.5 cm
 Jets: 35 - 4 Swirl Stainless Steel Jets
 Seats: 6 Adults
 Litres: 1040 L

Jet System

Grey / Stainless Steel	35 Total
Poly Storm Twin Spinner	2
Poly Storm Directional	8
Cluster Storm Rifle	8
Mini Storm Directional	17
Ozone Purification Jet	1
Laminar Fountain Jet	2

Weight: Dry / Filled (approx.) 328 kg. / 1451 kg.

GL625L (Lounger Equipped)



Size: 183 x 183 x 85 cm
 Jets: 25 - 4 Swirl Stainless Steel Jets
 Seats: 2 Adults
 Litres: 492 L

Jet System

Grey / Stainless Steel	25 Total
Poly Storm Twin Spinner	2
Poly Storm Directional	6
Cluster Storm Rifle	2
Mini Storm Directional	15
Ozone Purification Jet	1
Waterfall	1

Weight: Dry / Filled (approx.) 215 kg. / 1031 kg.

GL525L (Lounger equipped)



Size: 153 x 211 x 85 cm
 Jets: 25 - 4 Swirl Stainless Steel Jets
 Seats: 3 Adults
 Litres: 851 L

Jet System

Grey / Stainless Steel	25 Total
Poly Storm Twin Spinner	2
Poly Storm Directional	6
Cluster Storm Rifle	2
Mini Storm Directional	15
Ozone Purification Jet	1
Laminar Fountain Jet	2

Weight: Dry / Filled (approx.) 217 kg. / 1020 kg.

GL200



Size: 152 x 203 x 84 cm
 Jets: 15 Grey & Stainless Steel Jets
 Seats: 4 Adults
 Litres: 851 L

Jet System

Grey / Stainless Steel	15 Total
Poly Storm Spinner	1
Poly Storm Directional	3
Adj Cluster Storm	6
Mini Storm Spinner	3
Mini Storm Directional	2
Cascading Waterfall	1
Ozone Purification Jet	1

Weight: Dry / Filled (approx.) 362 kg. / 1542 kg.

Standard Features on the GL635L & GL625L		Optional Features (GL635L Only)	
Gecko™ XE Class Pack 20 AMP Digital Topside Control One 56 F 2.5 bhp Pump 2 kW Heater 50 ft ³ Filtration Icynene™ Foam Insulation	Lucite™ Acrylic Surface Material Maintenance Free Cabinet ABS Bottom-Wrap Plasma Ozone Water Treatment LED Lighting LED Lit Cabinet Corners	Laminar Fountain Jets (GL635L) Waterfall (GL625L) Padded Headrests Diverter VGB Compliant Intake 3 Yr. Parts / Labour Warranty	(CIRC) Circulation Pump • Stereo System <i>Waterproof Remote & Subwoofer</i> • (IT) in.Touch™ • (CL) in.Clear™ Sanitation System Additional charges apply

Standard Features on the GL525L & GL200			Optional Features
Gecko™ XE Class Pack 20 AMP Digital Topside Control One 56 F 2.5 bhp Pump 2 kW Heater 50 ft ³ Filtration Icynene™ Foam Insulation	Lucite™ Acrylic Surface Material Maintenance Free Cabinet ABS Bottom-Wrap Plasma Ozone Water Treatment LED Lighting LED Lit Cabinet Corners	Laminar Fountain Jets (GL525L) Padded Headrests Diverter VGB Compliant Intake 3 Yr. Parts / Labour Warranty	• (IT) in.Touch™ Additional charges apply

*Stereo System not available on GL625L and GL525L

GL 1200



Size: 231 x 366 x 135 cm
 Jets: 31 Black & Stainless Steel Jets
 Seats: 4 Adults (1 Swimmer / 3 Seats)
 Gallons: 5300 L

Black / Stainless Steel 31
 Old Faithful Power Jets 4
 Mini Storm Directional 10
 Mini Storm Spinners 11
 Fountain Jets 6
 Air Controls 4
 1" Water Diverter 1
 220 V / 32 A Electrical
 4kW Heater
 9.29 Sq. M filtration system

Weight: Dry / Filled (approx.)
 907 kg. / 5987.

GL 1400 (Lounger Equipped)



Size: 236 x 432 x 135 cm
 Jets: 35 Black & Stainless Steel
 Seats: 5 Adults (1 Swimmer / 4 Seats)
 Gallons: 6625 L

Black / Stainless Steel 35
 Old Faithful Power Jets 4
 Mini Storm Directional 12
 Mini Storm Spinners 7
 Poly Large Face Spinners 2
 Poly Large Face Direct 2
 Clustor Pulsators 4
 Fountain Jets 6
 Air Controls 4
 1" Water Diverter 1
 220 V / 32 A Electrical
 (2) 4kW Heaters
 9.29 Sq. M filtration system

Weight: Dry / Filled (approx.)
 996 kg. / 6895 kg.

GL 1600 (Lounger Equipped) (Stereo Equipped)



Size: 236 x 486 x 135 cm
 Jets: 41 Black & Stainless Steel
 Seats: 5 Adults (1 Swimmer / 4 Seats)
 Gallons: 7571 L

Black / Stainless Steel 41
 Old Faithful Power Jets 4
 Mini Storm Directional 2
 Poly Storm 7
 Poly Storm Adj. Large Face 2
 Poly Storm Massage Large Face 2
 Power Storm Resonators 2
 Clustor Pulsators 6
 Fountain Jets 8
 Air Controls 3
 1" Water Diverter 1
 2" Water Diverter 1
 220 V / 32 A Electrical
 (2) 4kW Heaters
 9.29 Sq. M filtration system
 *(2) Plasma Ozone generators

Weight: Dry / Filled (approx.)
 1361 kg. / 8618 kg.

Cover Features & Benefits

- 1 Double Sewn, Hand Grips**
Provide superior durability and an extra level of comfort.
- 2 Insulated Central Seam**
Helps to eliminate heat loss between the cover fold when spa is not in use.
- 3 4 Child Resistant Locking Mechanisms**
Fasten to each corner of the spa, providing that extra peace of mind.
- 4 Sealed Interior Hexene Poly Bag**
Protects inner foam core by reducing sweating and moisture. Continuous heat guard

Garden Leisure recommends that you keep your cover on and locked when spa is not in use!



Garden Leisure Spas Rest-Assured Warranty

- 15 Fifteen Year Shell Structure Warranty**
Garden Leisure Spas warrants its spas not to leak, meaning to be structurally sound and capable of holding water only, and against loss of water through the fiberglass laminate of the spa shell caused by defects in materials and/or workmanship for a period of FIFTEEN YEARS from the original date of purchase.
- 5 Five Year Surface Finish of Shell Warranty**
Garden Leisure Spas warrants the surface finish of its spas to be free from blistering and cracking due to defects in the acrylic surface material for a period of FIVE YEARS from the original date of purchase.
- 3 Three Year Component and Labor Warranty**
Garden Leisure Spas warrants the electrical components: heaters, pumps, relays and contactors and other spa components against malfunction, leaks and/or defects in materials and/or workmanship for a period of THREE YEARS from the original date of purchase.
- 3 Three Year Plumbing Warranty**
Garden Leisure Spas warrants all plumbing parts to be free from defects in material and/or workmanship for a period of THREE YEARS from the original date of purchase.
- 1 One Year - Other Warranties**
See Garden Leisure Spas Limited Warranty for additional information

Standard Features on the GL 1200 / GL 1400 & GL 1600 Swim Spas			Optional Features
Gecko™ Pack	Treated Plywood Bottom	Diverter	• Rowing / Exercise Equipment
5.0bhp Viper™ pumps	Underwater Lights	VGB Compliant Intake	
2.5bhp pump	LED Lighting	Waterfall	
Digital Topside Controls	Rowing / Exercise equipment GL1600	Illuminated River Jets	Additional charges apply
Foam Insulation	Padded Headrests	Bluetooth™ Stereo System	
Maintenance Free Cabinet	Lucite™ Sterling Silver Acrylic		
		<small>*Bluetooth™ audio system is standard on GL 1600</small>	<small>*Rowing / Exercise equipment is standard on GL 1600</small>

Spa Safety

- Maintain constant adult supervision when children are in or near ANY body of water.
- Install fences, barriers and spa covers to prevent unsupervised access, especially by young children.
- Always completely remove your spa cover before using your spa.
- Inspect your spa equipment on a regular basis to ensure that it is in good working order and that it is safe.
- Always test the temperature of your spa's water before entering the spa. It is recommended that maximum water temperature never exceed 104°F (40°C). Do not soak for more than 15 minutes at one sitting in 104°F (40°C) water.
- Individuals with certain medical conditions, such as heart disease, diabetes, high or low blood pressure, and pregnant women, should not use a spa without advance approval by their physician. If a person has any doubt as to whether a medical condition should limit their use of a spa, they should seek prior consultation with their physician. Individuals with open cuts or wounds should not use a spa until completely healed
- Never use a spa when you are alone and never use a spa while using or after using alcohol or drugs that may cause sleepiness, drowsiness, or raise or lower blood pressure.
- Do not allow unsafe or risky behavior in and around the spa.
- Consult with a licensed electrician for installation of or any work to your spa. If you are installing your own spa, it is your responsibility that all work performed complies with the National Electrical Code and all other applicable codes and regulations.
- Your spa's jets, grates, skimmer and main drain should be properly maintained and secured. Spa users should be instructed not to place any part of their body into such outlets as entrapment and drowning can occur. Spa users with long hair should also be cautioned not to get their hair near such outlets.
- Keep a first aid kit in close proximity to your spa.
- Maintenance and safety manuals contain detailed tips and recommendations and should be read, followed and applied on a regular basis.

Be Responsible !

Spa Accessories



Packed full of every product that your Spa / Hot Tub would ever need



Green Manufacturing Procedures

Healthier • Quieter • More Energy Efficient

Facility conscious procedures

- Manufacturing facility is environmentally conscious; uses "green manufacturing" procedures.
- Facility is Regulatory Agency Compliance and has been rated as a "Clean Air" facility by the U.S. EPA.

Spa model procedures and construction

- Frame complies with U.S. EPA's new standards on treated wood.
- Recycled acrylic and resin added to spa bottom for superior support.
- Suctions and Drains are VGB 2008 Compliant and UL tested.
- L.E.D. lighting systems have longer life with reduced heat emissions
- Spa pumps offer supreme operating efficiency on both high and low speeds ! This SAVES ENERGY and MONEY!
- Circ Pump benefits
 - Circ Pumps are 40% more efficient than standard induction motors
 - CEC title 20 compliant
 - 150 watts of performance for only 108 watts of power
- ABS bottoms on spa models reduce operating cost and increase energy efficiency by keeping heat in spa cavity.
- Water purification is comprised of Ozone technology, Microban® embedded Pleatco™ filters and user friendly, adjustable filtration cycles - This results in clean water and the reduction of added chemicals
- Insulation benefits
- Icynene™ spray foam - 100% free from HFC's, PPBDE's and no detectable VOC's after 30 days - These are elements that contribute to Global warming
 - Icynene™ delivers up to 50% more energy savings versus traditional spray foam insulation
 - Conforms to all ASTM standards
 - Full compliance with WEES and RHEEM EU standards
 - Installed foil "surround" wrap retains heat from pumps, which keeps the entire cavity warm and reduces energy cost.



Our New Range of Premium Spas & Swim Spas Out Now !



Taking the Spa Experience to a NEW LEVEL

Garden Leisure Spas proudly uses recycled materials where possible. We practice "Green Manufacturing" procedures, while ensuring an unrivaled standard of quality.